

We have some exciting news to share in this month's newsletter. Our Aventus line of pre-configured ventilation equipment is officially available to ALL representatives. This **HIGH EFFICIENCY** line of equipment is targeted to those customers who value the quality and performance of custom equipment at a more cost optimized price point. The initial Aventus offering is divided into two main platforms shown below. Contact [Xetex](#) to schedule a webinar with your office and visit the [Aventus page on our website](#) to download the [brochure](#) and [catalog](#).

AVENTUS ERV

- 1,000-7,000 CFM
- Up to 47 RER ** Industry leading**



Casing Construction

- 2" dual-wall casing with low leakage.

Direct-drive Variable Speed ECM Plenum Fans

- More energy efficient than AC motor

Energy Recovery Air-to-Air Heat Exchangers

- Enthalpy Wheels (3A molecular sieve) from AIRotor®
- Enthalpy Flat Plates from CORE®
- Sensible Flat Plates from Xetex®

Cooling Options

- CW, Evaporator Only

Heating Options

- HW, Steam, Electric

AVENTUS DOAS

- 5,000-12,000 cfm
- 20-50 Tons (Air Cooled Only)
- With or Without Energy Recovery
- up to 20 IEER
- up to 10.9 ISMRE ** Industry leading**

Casing Construction

- 2" dual-wall casing with low leakage.

Direct-drive Variable Speed ECM Plenum Fans

- More energy efficient than AC motor

Low Sound / High Efficiency ECM Condenser Fans

- Modulating head pressure control

Variable Speed Inverter Scroll Compressor

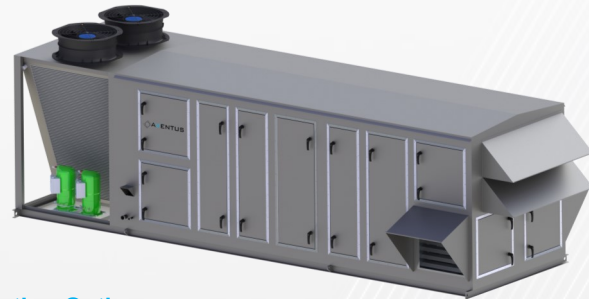
- Exceptional energy efficiency and low sound levels.

Energy Recovery Air-to-Air Heat Exchangers

- Enthalpy Wheels (3A molecular sieve) from AIRotor®
- Enthalpy Flat Plates from CORE®
- Sensible Flat Plates from Xetex®

Cooling Options

- DX, CW, Evaporator Only



Heating Options

- HW, Steam, IDF Furnace, Electric, HGRH
- Large capacity, high turn down 10:1 heat for northern climates, up to 1200 MBH

Quality Dampers

- Low leakage blades

DDC Controls (optional)

- Full Sequence of Operation Controls or Refrigeration only Controls

Filtration Options

- 2" MERV 8 OA and SA filters (standard)
- 4" Final Filters (optional)

Hot Gas Reheat Coil with Modulating 3-Way Valve

- Enhanced dehumidification capabilities.
- Bypasses hot gas from the compressor to the reheat coil.