

Did You Know...

April 2021 Edition

Featured Unit: Casino Energy Recovery Units

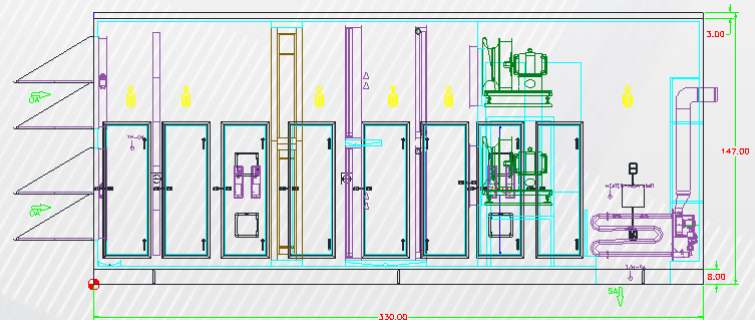
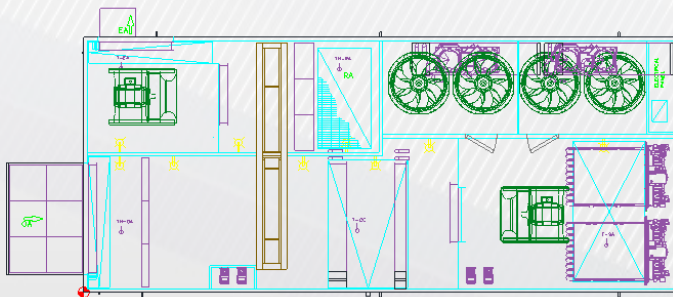
Contact us:
sales@xetexinc.com

Casinos face the challenge of introducing large amounts of outside air while ensuring filtered and temperature controlled environments for a comfortable and welcoming condition for their patrons. This month's project, features five large outdoor energy recovery units to help tackle the casino's ventilation challenges. As we all know, conditioning the outside air is the most energy intensive portion of their HVAC system. To help reduce that energy consumption, these units were equipped with an AiRotor 3A energy recovery wheel benefitting from 72% energy recovery effectiveness. Additionally the wheel was specially treated on the face with an acrylic polymer coating to reduce potential of common casino exhaust air contaminants from "sticking" to the face of wheel. This will ensure long lasting wheel performance and continued unit energy savings.

Unit highlights:

- Outdoor unit with 18 gauge acrylic painted exterior & 20 gauge galvanized interior
- 2" Double wall injected foam panels with thermal break construction
- 4" MERV 8 OA filter & 2" MERV 8 RA filter
- 2 evaporator coil with galvanized casing, and SS drain pan
- Hot gas reheat
- Dual indirect gas fired heaters (10:1 turndown)
- 3A AiRotor enthalpy wheel
 - ◊ Acrylic polymer coating
- Supply Air—2 fan array (direct drive)
- Exhaust Air—2 fan array (direct drive)

Model:	AVR-3200-RT-CD- HG-HI-AC	
Height:	144"	
Width:	142"	
Length:	330"	
Weight:	23,800 lbs	
Supply CFM:	26,000	
Return/Exh CFM:	27,000	
Cool type:	DX w/ ACCU	
Cooling capacity:	90 Tons	2 circuits
Heating type:	Indirect gas heat	
Heating capacity:	800 MBH output	10:1 turndown
Energy Recovery	3A Enthalpy Wheel	



If you need assistance on any application you are currently working on please contact Xetex Sales at 612-724-3101 or email us at sales@xetexinc.com.