



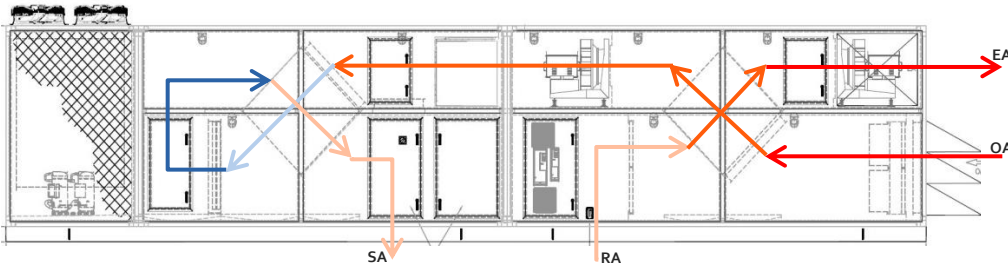
Did You Know...
March 2018 Edition

Featured Unit: Air-Cooled DX Rooftop Air Handler with Gas Heat and Dual Pass Heat Exchanger

Contact us at
sales@xetexinc.com

Double Pass Heat Exchangers

There is no one size fits all rule when it comes to heat exchanger applications. This month's unit demonstrates just that fact with a dual pass heat exchanger arrangement to increase the unit's energy efficiency while reducing overall required mechanical cooling load by more than 12 nominal tons. The design of this unit is to deliver 100% outside air at a neutral temperature without the need of any mechanical reheat. This is accomplished by using the second heat exchanger in the supply air stream to recover the heat from the outdoor air. The drawing of the unit below depicts the supply air stream path through the unit.



Unit highlights include:

- 2" double wall casing with foam injected insulation
- Two epoxy coated all aluminum sensible flat plate heat exchangers
- Two fully modulating face and bypass dampers for each heat exchanger
- Thermal break construction
- Integral Air-Cooled DX condenser
- Indirect Gas heat with 5:1 modulation
- Direct drive fans on 1" spring isolation with VFD control
- 304 stainless steel drain pans

If you need assistance on any application you are currently working on please contact XeteX Sales at 612-724-3101 or email us at sales@xetexinc.com.

Unit Specification:

Model:	XHS-50-84-RT-BP-CD-HI-FF-AC		
Height:	111"	Width:	116"
Length:	527"	Weight:	25,000 lbs.
OA Summer Design:	88°Fdb / 71.9°Fwb	OA Winter Design:	3.2°Fdb
Supply CFM:	15,000	Energy Recovery:	(2) Sensible Heat Exchangers
Cool Type:	DX Air-Cooled	Heat Type:	Indirect Gas Fired
Leaving Cooling Temp:	71.8°Fdb / 61.2°Fwb	Leaving Heating Temp:	78.9°Fdb

